

monitillo<sub>1980</sub>

—  
Home Collection

Pietre di Monitillo

-  
Home Collection



# IL PROGETTO

## THE PROJECT

Monitillo Marmi nasce ad Altamura nel 1980, proponendo un modello basato sulla scrupolosa osservazione dei dettagli, la maniacale attenzione alla scelta del materiale e l'elaborazione di soluzioni personalizzate e mai banalmente ripetitive.

Pietre di Monitillo è una collezione di oggetti in pietra frutto della collaborazione tra Monitillo Marmi e designer internazionali, eterogenei per esperienze e linguaggio, ma accomunati dalla passione per le potenzialità espressive della materia.

Le pietre, selezionate con cura dai maestri artigiani, vengono lavorate mediante tecnologie a controllo numerico per creare sculture per il quotidiano, da vivere e ammirare.

---

*Monitillo Marmi was founded in 1980 in Altamura, Italy, offering an entrepreneurial model based on care for the details, attention to the choice of material and customized solutions.*

*Pietre di Monitillo is a collection of stone objects, the result of a cooperation between Monitillo Marmi and international designers, from disparate experiences and language, with a shared passion for the expressive potential of the material.*

*The stones, carefully selected by master craftsmen, are processed by numerical control technology to create sculptures for the daily life, to experience and enjoy.*

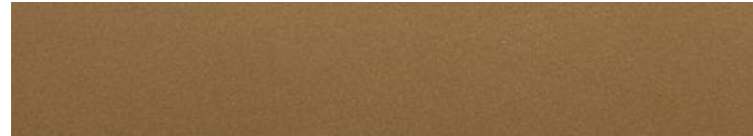
# MATERIALI

## MATERIALS

### METALLI - Metals



**Metallo Nero**  
*Black Metal*



**Bronzo**  
*Bronze*



**Ottone**  
*Brass*

### VETRI - Glasses



**Extrachiaro**  
*Extraclear*

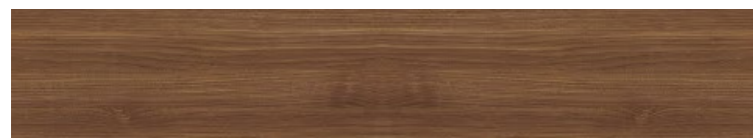


**Fumè Grigio**  
*Fumè Grey*



**Fumè Bronzo**  
*Fumè Bronze*

### LEGNI E ARGILLE - Woods and Clays



**Noce**  
*Walnut*



**Rovere tinto Wengè**  
*Wengè Stained Oak*



**Argilla**  
*Clay*

**Bianco Carrara**  
*White Carrara*



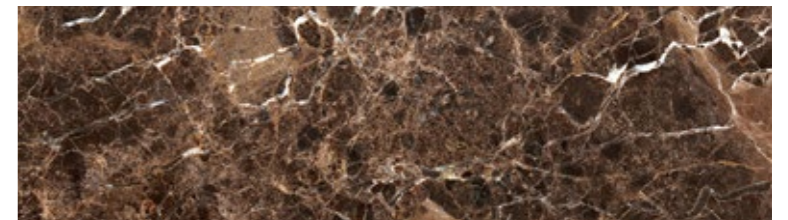
**Calacatta Oro**  
*Gold Calacatta*



**Travertino/Crema Imperiale**  
*Travertine/Imperial Cream*



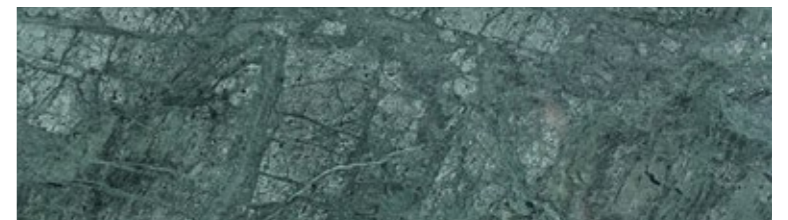
**Emperador Scuro**  
*Dark Emperador*



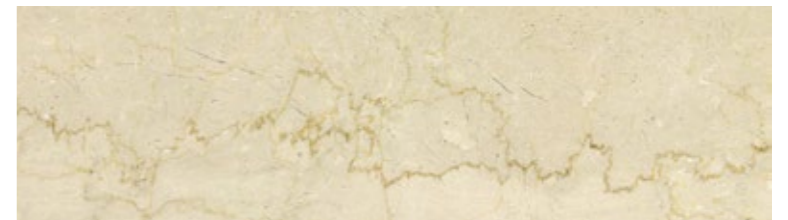
**Nero Marquina**  
*Marquina Black*



**Verde Imperial**  
*Imperial Green*



**Botticino**  
*Botticino*



# DESIGNERS

## DESIGNERS



**CLAESSON KOIVISTO RUNE**



**SILVIO GIROLAMO**



**LORENZO PALMERI**



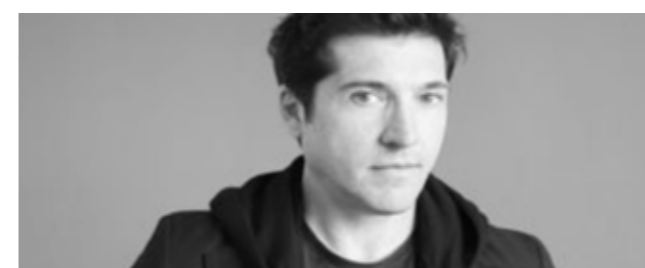
**MATTEO RAGNI**



**GIOVANNI PESCE**



**LUCA NICHETTO**



**PIER LOMASCOLO**



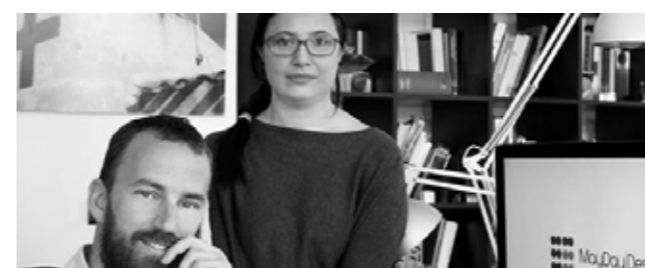
**FÉLIX MILLORY**



**EMMANUEL GALLINA**



**EFREM BONACINA + GRETA MACRÌ**



**MAYDAY DESIGN + ANDREA MALDIFASSI**



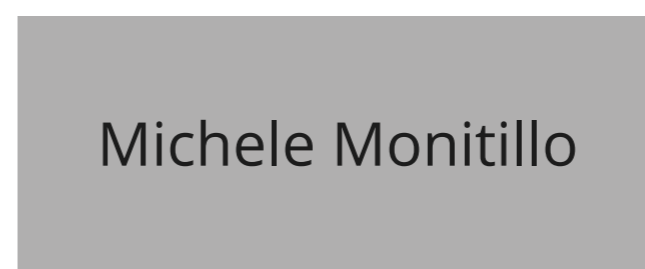
**STUDIOPEPE**



**MRSMITH STUDIO**



**MAGNUS LONG DESIGN STUDIO**



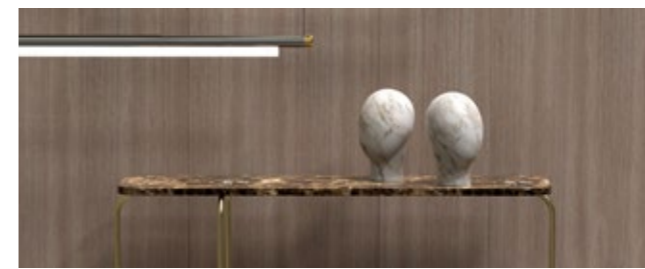
**MICHELE MONITILLO**



**SVEVO**  
Michele Monitillo  
pag. 12



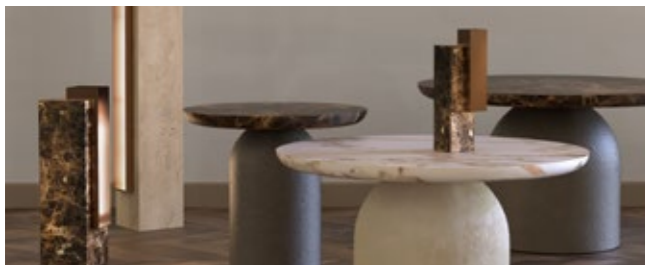
**MAESTRO**  
Efrem Bonacina e Greta Macrì  
pag. 20



**MOLINA**  
Efrem Bonacina e Greta Macrì  
pag. 58



**MILETO**  
Efrem Bonacina e Greta Macrì  
pag. 62



**SATURO**  
Silvio Girolamo  
pag. 24



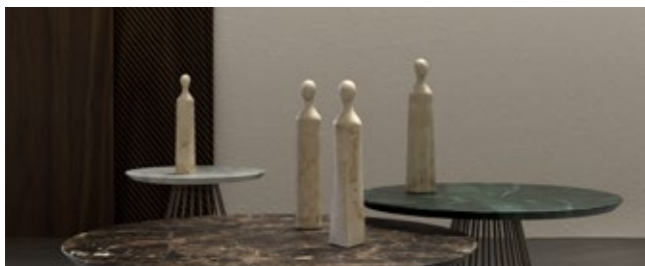
**DUCALE**  
Michele Monitillo  
pag. 30



**ADRIA**  
Michele Monitillo  
pag. 66



**BADISCO**  
Claesson Koivisto Rune  
pag. 72



**TORRES**  
Michele Monitillo  
pag. 36



**TORRES**  
Michele Monitillo  
pag. 40



**MAXIMUS**  
Emmanuel Gallina  
pag. 76



**CITY**  
Studiopepe  
pag. 82



**TORRES**  
Michele Monitillo  
pag. 44



**ACAYA**  
Efrem Bonacina e Greta Macrì  
pag. 50



**COCCARO**  
Michele Monitillo  
pag. 88

# SVEVO

Michele Monitillo

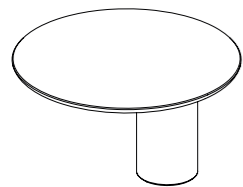


**SVEVO**

Michele Monitillo

Coffee table in travertine con top laccato.

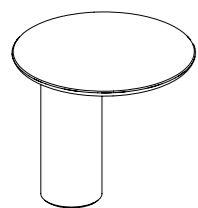
*Travertine coffee table with lacquered top.*



**MO.T13**  
Ø600 x 370

● Travertino - Laccato Marrone Castagno  
*Travertine - Chestnut Brown Lacquered*

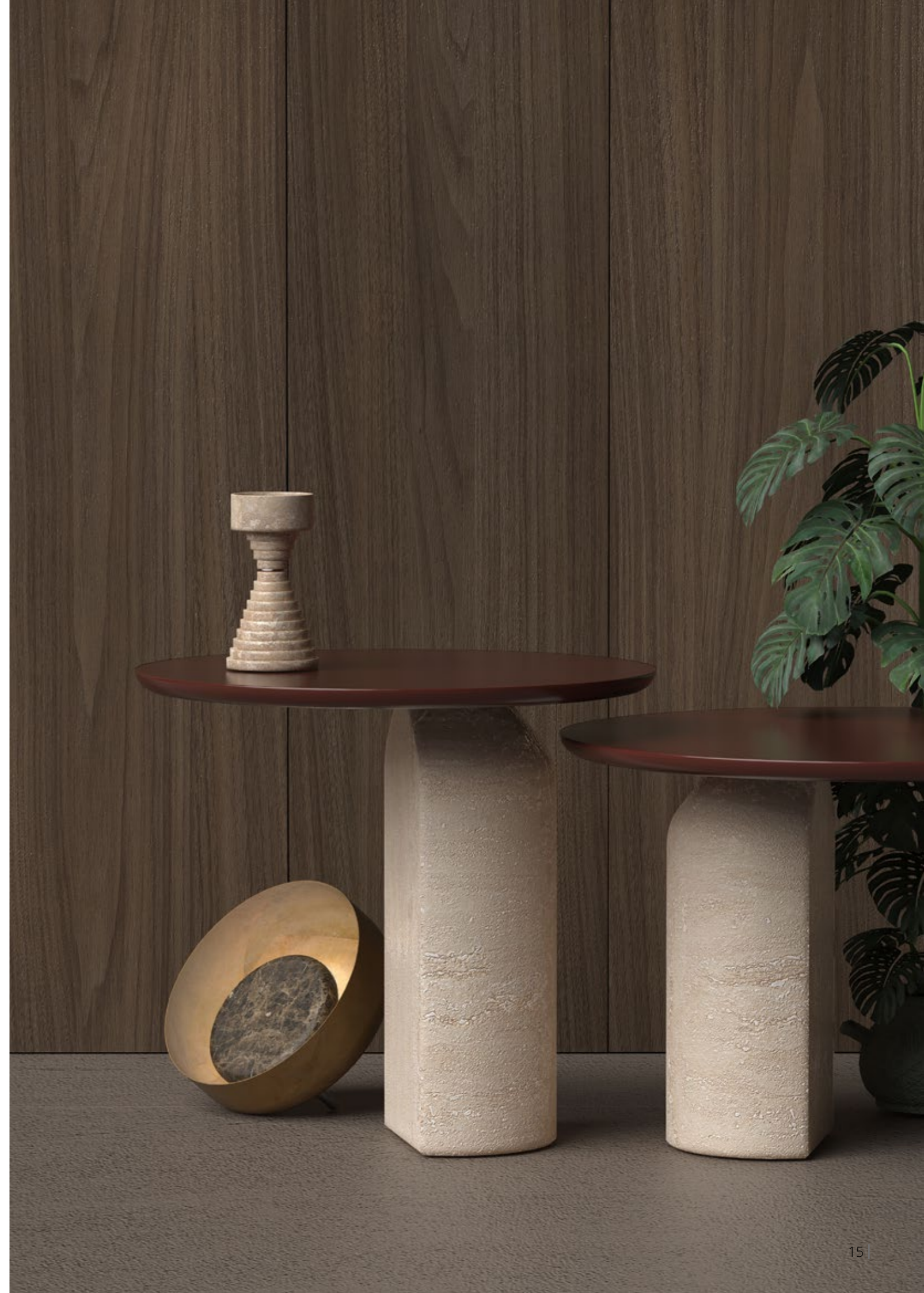
● Travertino - Laccato Bianco Perla  
*Travertine - White Pearl Lacquered*



**MO.T12**  
Ø500 x 450

● Travertino - Laccato Marrone Castagno  
*Travertine - Chestnut Brown Lacquered*

● Travertino - Laccato Bianco Perla  
*Travertine - White Pearl Lacquered*





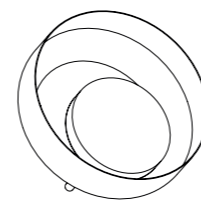


## LEUCA

Efrem Bonacina e Greta Macrì

Lampada da tavolo o pavimento con dimmerazione touch.

*Table/floor lamp with touch dimmer.*



**BM.C09**  
Ø300 x 100

● Nero Marquinia - Metallo Nero  
*Nero Marquinia - Black Metal*

● Calacatta Oro - Finitura Ottone  
*Gold Calacatta - Brass Finishing*

● Emperador Scuro - Finitura Bronzo  
*Dark Emperador - Bronze Finishing*

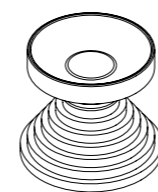


**KAREN**

Efrem Bonacina e Greta Macrì

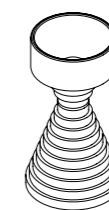
Centrotavola scultoreo con dettaglio in metallo.

*Sculpture centerpiece with metal detail.*



**BM.C04**  
Ø180 x 170

● Travertino - Finitura Bronzo  
*Travertine - Bronze Finishing*



**BM.C05**  
Ø120 x 240

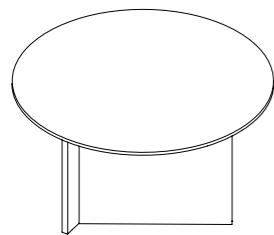
● Travertino - Finitura Bronzo  
*Travertine - Bronze Finishing*

# MAESTRO

Efrem Bonacina e Greta Macrì

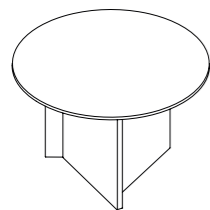
Coffee table in marmo con top in vetro.

*Marble coffee table with glass top.*



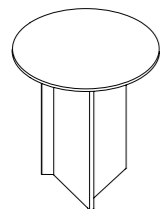
**BM.T07**  
Ø800 x 380

● ● ● Calacatta Oro - Emperador Scuro - Vetro Bronzo  
*Gold Calacatta - Dark Emperador - Bronze Glass*



**BM.T08**  
Ø600 x 430

● ● ● Calacatta Oro - Emperador Scuro - Vetro Bronzo  
*Gold Calacatta - Dark Emperador - Bronze Glass*



**BM.T09**  
Ø450 x 480

● ● ● Calacatta Oro - Emperador Scuro - Vetro Bronzo  
*Gold Calacatta - Dark Emperador - Bronze Glass*

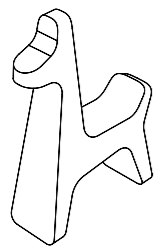




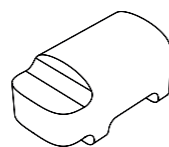
**SAFARI**  
Matteo Ragni

Pets family

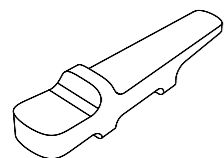
*Pets family.*



**MR.C01**  
160 x 65 x 240  
●● Travertino - Crema Imperiale  
Travertine - Imperial Cream



**MR.C03**  
150 x 80 x 80  
●● Travertino - Crema Imperiale  
Travertine - Imperial Cream



**MR.C02**  
255 x 60 x 60  
●● Travertino - Crema Imperiale  
Travertine - Imperial Cream



**MR.C05**  
130 x 60 x 240  
●● Travertino - Crema Imperiale  
Travertine - Imperial Cream



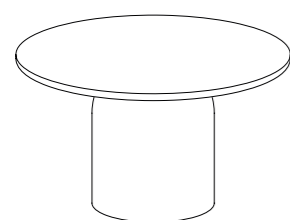
**MR.C06**  
125 x 50 x 240  
●● Travertino - Crema Imperiale  
Travertine - Imperial Cream

# SATURO

Silvio Girolamo

Coffee table con top in marmo.

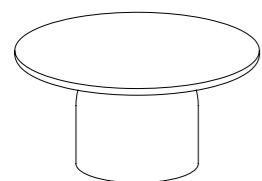
*Coffee table with marble top.*



**SG.T03**  
Ø800 x 400

●● Emperador Scuro - Argilla scura  
*Gold Calacatta - Dark Clay*

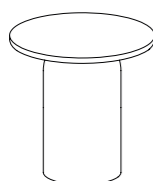
●● Calacatta Oro - Argilla Chiara  
*Gold Calacatta - Clear Clay*



**SG.T01**  
Ø600 x 350

●● Emperador Scuro - Argilla scura  
*Gold Calacatta - Dark Clay*

●● Calacatta Oro - Argilla Chiara  
*Gold Calacatta - Clear Clay*



**SG.T02**  
Ø400 x 400

●● Emperador Scuro - Argilla scura  
*Gold Calacatta - Dark Clay*

●● Calacatta Oro - Argilla Chiara  
*Gold Calacatta - Clear Clay*



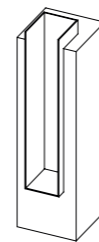


## SPECCHIA

Félix Millory Architecture

Lampada da tavolo o pavimento in marmo e metallo con luce indiretta.

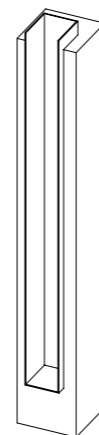
*Marble and metal floor/table lamp with indirect light*



**FM.C01**  
120 x 140 x 430

●● **Travertino - Finitura Bronzo**  
*Travertine - Bronze Finishing*

●● **Emperador Dark - Finitura Bronzo**  
*Dark Emperador - Bronze Finishing*



**FM.C02**  
120 x 140 x 960

●● **Travertino - Finitura Bronzo**  
*Travertine - Bronze Finishing*

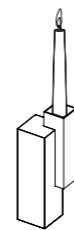
●● **Emperador Dark - Finitura Bronzo**  
*Dark Emperador - Bronze Finishing*



**SABINA**  
Félix Millory Architecture

Portacandele in marmo e metallo

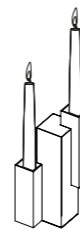
*Marble and metal candle holder*



**FM.C03**  
72 x 72 x 230

●● Travertino - Finitura Bronzo  
*Travertine - Bronze Finishing*

●● Emperador Dark - Finitura Bronzo  
*Dark Emperador - Bronze Finishing*



**FM.C04**  
100 x 100 x 230

●● Travertino - Finitura Bronzo  
*Travertine - Bronze Finishing*

●● Emperador Dark - Finitura Bronzo  
*Dark Emperador - Bronze Finishing*

# DUCALE

Michele Monitillo





**DUCALE**  
Michele Monitillo

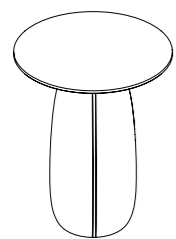
Coffee table in travertine con dettaglio in metallo.

*Travertine coffee table with metal detail.*



**MO.T11**  
Ø500 x 450

●● Travertino - Finitura Bronzo  
*Travertine - Bronze Finishing*



**MO.T10**  
Ø450 x 550

●● Travertino - Finitura Bronzo  
*Travertine - Bronze Finishing*

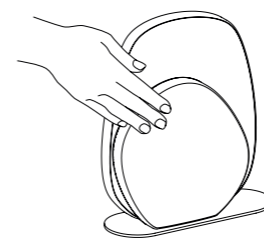




**ANTUMBRA**  
Magnus Long Design Studio

Lampada da tavolo o pavimento con dimmerazione touch.

*Table/floor lamp with touch dimmer.*



**ML.C01**  
270 x 110 x 320

○ ● ● Bianco Carrara - Verde Imperial - Ottone Satinato  
*White Carrara - Imperial Green - Brushed Brass*

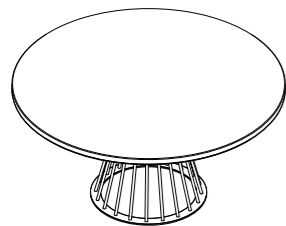
○ ● ● Bianco Carrara - Nero Marquina - Metallo Nero  
*White Carrara - Marquina Black - Black Metal*

# TORRES

Michele Monitillo

Set tavoli con top in marmo e base in metallo.

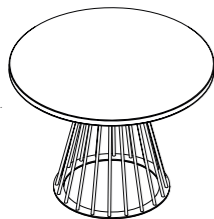
*Tables set with marble top and metal base.*



**MO.T09**

Ø800 x 370

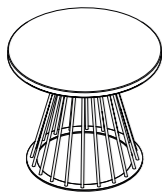
● Emperador Scuro - Finitura Bronzo  
*Dark Emperador - Bronze Finishing*



**MO.T08**

Ø600 x 420

● Verde Imperiale - Finitura Bronzo  
*Imperial Green - Bronze Finishing*



**MO.T07**

Ø450 x 370

● Bianco Carrara - Finitura Bronzo  
*Carrara White - Bronze Finishing*





## GALERIE

Efrem Bonacina e Greta Macrì

Sculture decorative con basi geometriche differenti.

*Monolithic sculptures with different geometric bases*



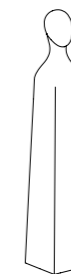
**MO.C04**  
Ø55 x 308

● Botticino  
Botticino



**MO.C05**  
Ø64x 308

● Botticino  
Botticino



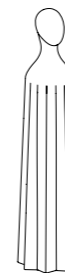
**MO.C06**  
Ø54x 308

● Botticino  
Botticino



**MO.C07**  
Ø69 x 308

● Botticino  
Botticino



**MO.C08**  
Ø74x 308

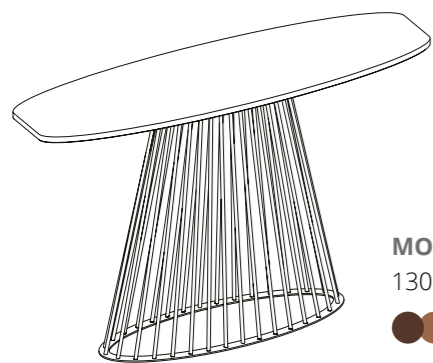
● Botticino  
Botticino

# TORRES

Michele Monitillo

Console con top in marmo e base in metallo.

*Console with marble top and metal base.*



**MO.T06**

1300 x 400 x 825

● **Emperador Scuro - Finitura Bronzo**  
*Dark Emperador - Bronze Finishing*

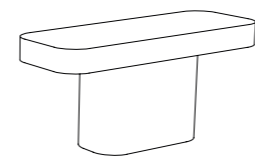




**TOR**  
Magnus Long Design Studio

Lampada orientabile.

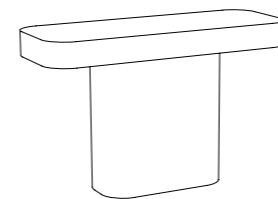
*Adjustable table lamp.*



**ML.C02**  
320 x 120 x 200

● Travertino  
Travertine

● Calacatta Oro  
Gold Calacatta



**ML.C03**  
320 x 120 x 300

● Travertino  
Travertine

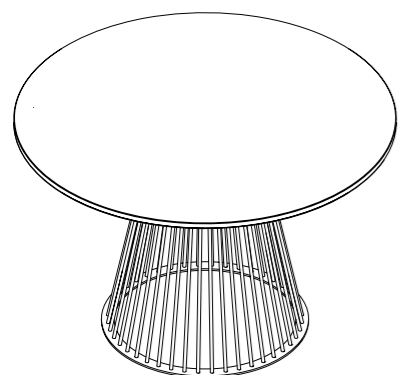
● Calacatta Oro  
Gold Calacatta

# TORRES

Michele Monitillo

Dining table con top in marmo e base in metallo.

*Dining table with marble top and metal base..*



**MO.T05**

Ø1200 x 750

○ ● White Carrara - Black Metal  
*White Carrara - Black Metal*

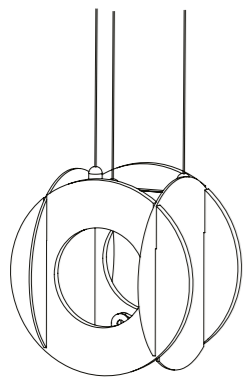


## SENATO

Efrem Bonacina e Pier Lomascolo

Case per speaker sospeso o da tavolo, disponibile in versione bluetooth.

*Table/ceiling speaker case, bluetooth version available.*

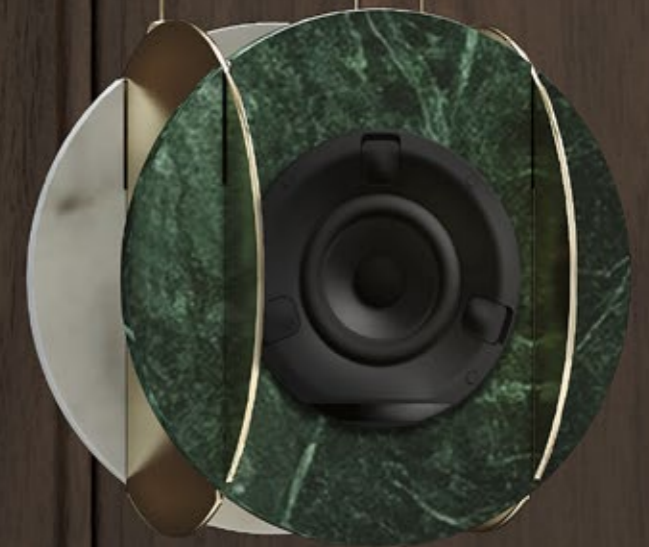


### EB.C01

235 x 235 x 235

●●● Bianco Carrara - Verde Imperial - Ottone Lucido  
*White Carrara - Imperial Green - Polished Brass*

●●● Bianco Carrara - Nero Marquinia - Metallo Nero  
*White Carrara - Marquinia Black - Black Metal*



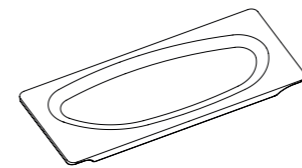




**VENERI**  
Emmanuel Gallina

Set di piatti da portata.

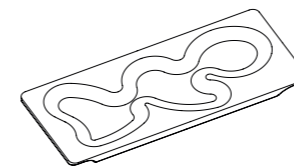
*Dinnerware set.*



**EG.C01**  
350 x 150 x 25

Bianco Carrara  
*White carrara*

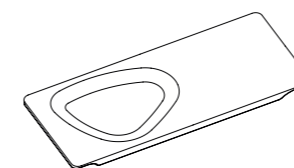
Verde Imperial  
*Imperial Green*



**EG.C02**  
350 x 150 x 25

Bianco Carrara  
*White carrara*

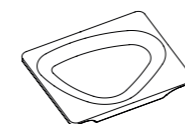
Verde Imperial  
*Imperial Green*



**EG.C03**  
350 x 150 x 25

Bianco Carrara  
*White carrara*

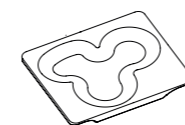
Verde Imperial  
*Imperial Green*



**EG.C04**  
180 x 150 x 25

Bianco Carrara  
*White carrara*

Verde Imperial  
*Imperial Green*



**EG.C05**  
180 x 150 x 25

Bianco Carrara  
*White carrara*

Verde Imperial  
*Imperial Green*

# ACAYA

Efrem Bonacina e Greta Macrì

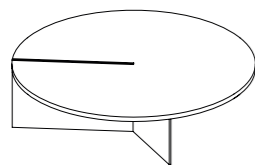


## ACAYA

Efrem Bonacina e Greta Macrì

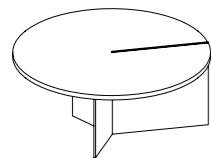
Coffee table in metallo con top in marmo.

*Metal coffee table with marble top.*



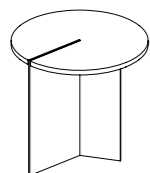
**BM.T12**  
Ø800 x 250

● Bianco Carrara - Metallo Nero  
*White Carrara - Black Metal*



**BM.T11**  
Ø650 x 300

● Bianco Carrara - Metallo Nero  
*White Carrara - Black Metal*



**BM.T10**  
Ø450 x 350

● Nero Marquina - Finitura Bronzo  
*Marquina Black - Bronze Finishing*





### LOTO

Efrem Bonacina e Greta Macrì

Vaso monofiore con inserto in metallo.

*Soliflower with metal insert.*



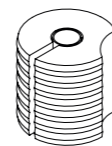
**BM.C06**  
Ø60 x 140

●● Bianco Carrara - Nero Marquinia  
*White Carrara - Marquinia Black*



**BM.C07**  
Ø72 x 70

●● Nero Marquinia - Finitura Bronzo  
*Marquinia Black - Bronze Finishing*



**BM.C08**  
Ø72 x 70

●● Nero Marquinia - Finitura Bronzo  
*Marquinia Black - Bronze Finishing*

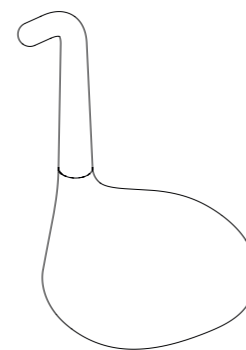


**NESSIE**

Luca Nichetto

Fermaporta con base in marmo.

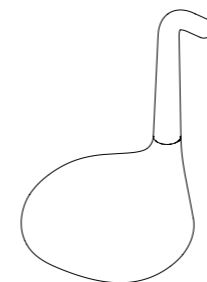
*Doorstop with marble base.*



**LN.C01**  
190 x 270 x 405

○ Bianco Carrara  
*White carrara*

● Nero Marquina  
*Marquina Black*



**LN.C02**  
140 x 200 x 300

○ Bianco Carrara  
*White carrara*

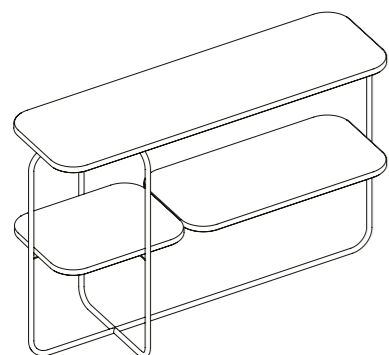
● Nero Marquina  
*Marquina Black*

# MOLINA

Efrem Bonacina e Greta Macrì

Console in metallo con ripiani in marmo.

*Metal console with marble tops.*



**BM.T01**

1200 x 400 x 800



Calacatta Oro - Emperador Scuro - Finitura Ottone  
*Gold Calacatta - Dark Emperador - Brass Finishing*



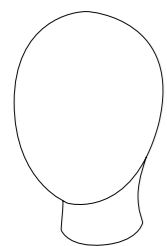


**GALERIE**

Efrem Bonacina e Greta Macrì

Scultura monolitica.

*Monolithic head sculpture*



**MO.C03**

150 x 182 x 240

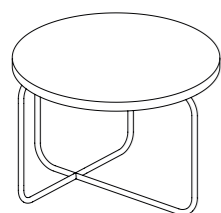
● Calacatta Oro  
*Gold Calacatta*

# MILETO

Efrem Bonacina e Greta Macrì

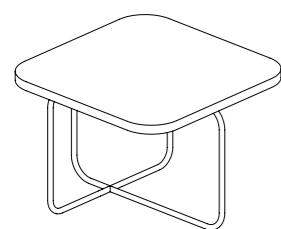
Tavolini in metallo con piano in marmo.

*Metal coffee tables with marble top.*



**BM.T04**  
Ø600 x 420

● Verde Imperial - Finitura Ottone  
*Imperial Green - Brass Finishing*



**BM.T06**  
500 x 500 x 470

● Verde Imperial - Finitura Ottone  
*Imperial Green - Brass Finishing*





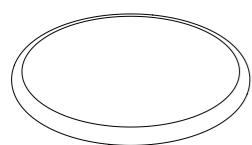


**SELCE**

Efrem Bonacina e Andrea Teoldi

Base di ricarica wireless compatibile con smartphone di ultima generazione.

*Wireless charging base compatible with the latest smartphones.*



**BT.C01**  
Ø110 x 20

○ Bianco Carrara  
*White carrara*

● Nero Marquina  
*Marquina Black*

● Verde Imperial  
*Imperial Green*

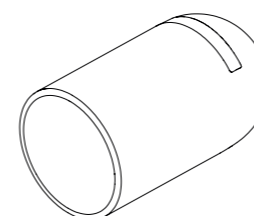


**OVO**

May Day Design e Andrea Maldifassi

Amplificatore e diffusore passivo, compatibile con Iphone.

*Passive amplifier compatible with Iphone.*



**MD.C01**  
Ø95 x 175

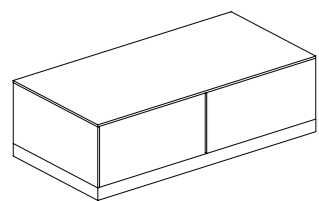
○ Bianco Carrara  
*White carrara*

# ADRIA

Michele Monitillo

Console con base in marmo e top in vetro.

*Console table with marble base and glass top.*



**MO.T02**

1200 x 600 x 360

● Bianco Carrara - Vetro fumè  
*White Carrara - Smoked Glass*

● Nero Marquinia - Vetro extrachiaro  
*Marquinia Black - Extraclear Glass*

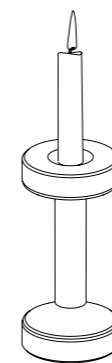




**TARA**  
Lorenzo Palmeri

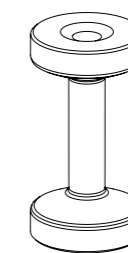
Portacandela monolitico, manubrio per fitness.

*Monolithic Candleholder, fitness handlebar*



**LP.C01**  
Ø90 x 185

○ Bianco Carrara  
White carrara



**LP.C02**  
Ø110 x 205

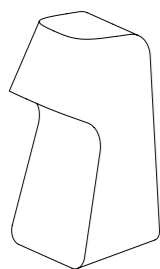
○ Bianco Carrara  
White carrara



**PINGU**  
Matteo Ragni

Fermalibri

*Bookend*



**MR.C04**  
90 x 110 x 200

○ **Bianco Carrara**  
*White carrara*

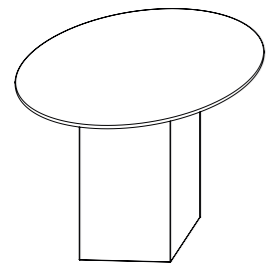
● **Nero Marquina**  
*Marquina Black*

# BADISCO

Claesson Koivisto Rune

Tavolo/Tavolino

Side Table/Coffee Table



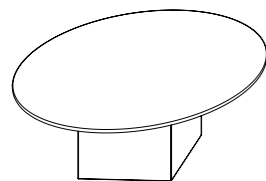
**CKR.T05**

Ø1000 x 750 x 650

○ Bianco Carrara  
White carrara

● Verde Imperial  
Imperial Green

● Travertino  
Travertine



**CKR.T04**

Ø690 x 520 x 450

○ Bianco Carrara  
White carrara

● Verde Imperial  
Imperial Green

● Travertino  
Travertine

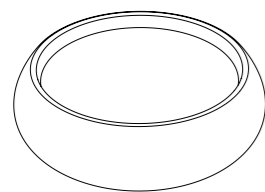




**SASSO**  
MrSmith Studio

Portaoggetti a tre scomparti, con coperchio in Teak.

*Three compartments tray with Teak cover.*



**MS.C01**  
Ø255 x 90

○ Bianco Carrara  
*White carrara*

● Legno Teak  
*Teak Wood*



**ORTE**  
Claesson Koivisto Rune

Vassoi/taglieri da portata modulari e componibili in set.

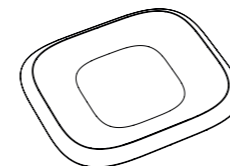
*Set of modular trays and chopping boards.*



**CKR.C01**  
165 x 135 x 27

○ Bianco Carrara  
*White carrara*

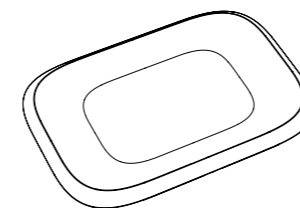
● Verde Imperial  
*Imperial Green*



215 x 190 x 27

○ Bianco Carrara  
*White carrara*

● Verde Imperial  
*Imperial Green*



305 x 215 x 27

○ Bianco Carrara  
*White carrara*

● Verde Imperial  
*Imperial Green*

# MAXIMUS

Emmanuel Gallina

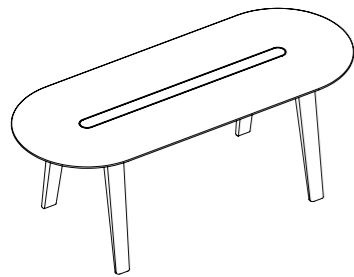


## MAXIMUS

Emmanuel Gallina

Tavolo con struttura in rovere tinto wengè.

*Table with oak structure in laquered wengè finishing.*





### EG.T01

2100 x 900 x 740

-  Bianco Carrara - Rovere Tinto Wengè  
*White Carrara - Wengè Stained Oak*
-  Nero Marquinia - Rovere Tinto Wengè  
*Marquinia Black - Wengè Stained Oak*
-  Verde Imperial- Rovere Tinto Wengè  
*Imperial Green - Wengè Stained Oak*
-  Emperador Scuro - Rovere Tinto Wengè  
*Dark Emperador - Wengè Stained Oak*

### EG.T06

2000 x 800 x 740

-  Bianco Carrara - Rovere Tinto Wengè  
*White Carrara - Wengè Stained Oak*
-  Nero Marquinia - Rovere Tinto Wengè  
*Marquinia Black - Wengè Stained Oak*
-  Verde Imperial- Rovere Tinto Wengè  
*Imperial Green - Wengè Stained Oak*
-  Emperador Scuro - Rovere Tinto Wengè  
*Dark Emperador - Wengè Stained Oak*



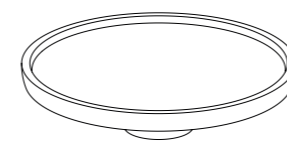




**COLIMENA**  
Giovanni Pesce

Alzata in marmo disponibile in due versioni.

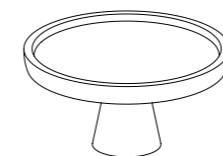
*Marble centerpieces available in two different sizes.*



**GP.C02**  
Ø400 x 100

○ Bianco Carrara  
White Carrara

● Travertino  
Travertine



**GP.C03**  
Ø300 x 150

● Nero Marquina  
Marquina Black

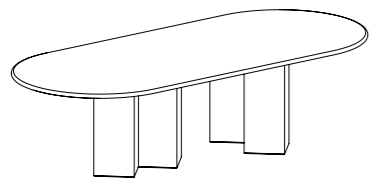
● Travertino  
Travertine

# CITY

Studiopepe



**CITY**  
Studiopepe  
Dining table in travertino  
*Travertine dining table*



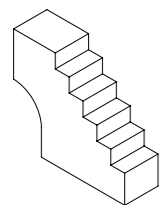
**SP.T06**  
2800 x 1200 x 750  
● **Travertino**  
*Travertine*



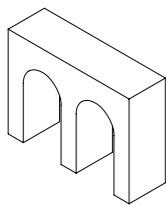


**CITY**  
Studiopepe  
Sculture monolitiche

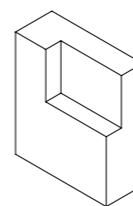
*Monolithic sculptures of different shapes*



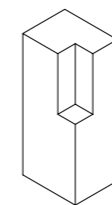
**SP.C01**  
400 x 120 x 350  
● Emperador Scuro ● Travertino  
*Dark Emperador Travertine*



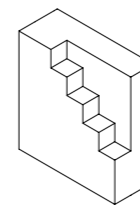
**SP.C02**  
400 x 120 x 300  
● Emperador Scuro ● Travertino  
*Dark Emperador Travertine*



**SP.C03**  
300 x 120 x 350  
● Emperador Scuro ● Travertino  
*Dark Emperador Travertine*



**SP.C04**  
150 x 120 x 350  
● Emperador Scuro ● Travertino  
*Dark Emperador Travertine*



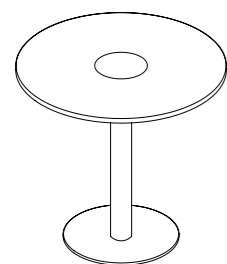
**SP.C05**  
300 x 120 x 320  
● Emperador Scuro ● Travertino  
*Dark Emperador Travertine*

# COCCARO

Michele Monitillo

Tavolo da bistrò con base in metallo e top in marmo.

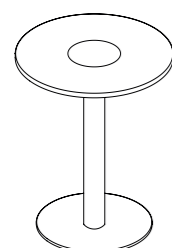
*Bistrò table with metal base and marble top.*



**MO.T03**  
Ø800 x 730

● Bianco Carrara - Metallo Nero  
*White Carrara - Black Metal*

● Calacatta Gold - Finitura Ottone  
*Gold Calacatta - Brass finishing*



**MO.T04**  
Ø600 x 730

● Bianco Carrara - Metallo Nero  
*White Carrara - Black Metal*

● Calacatta Gold - Finitura Ottone  
*Gold Calacatta - Brass finishing*

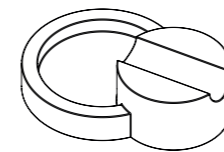




**ROCA**  
Efrem Bonacina e Greta Macrì

Portasigari e svuotatasche.

*Cigar holder/pocket emptier.*



**BM.C03**  
130 x 100 x 40

○ Bianco Carrara  
*White carrara*

● Nero Marquina  
*Marquina Black*

● Verde Imperial  
*Imperial Green*

# — Home Collection

Coffee Tables *Coffee Tables*

Dining Tables *Dining Tables*

Console *Console*

Icone *Icons*

Lampade *Lamps*

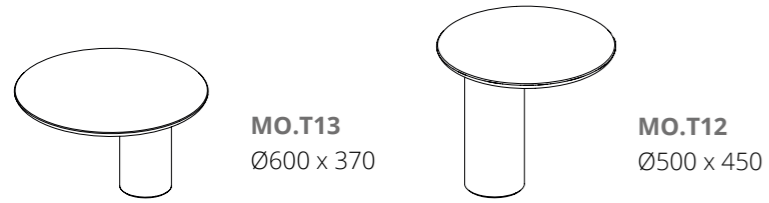
Complementi e centrotavola *Complements and Centerpieces*

Sculpture Collection *Sculpture Collection*

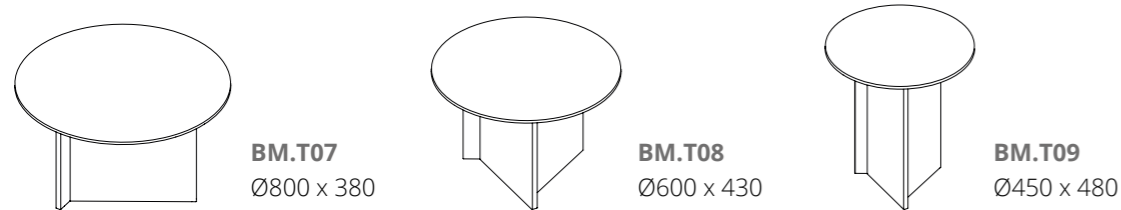
## COFFEE TABLES - DINING TABLES

Coffee Tables - Dining Tables

### SVEVO - Michele Monitillo\_pag. 14



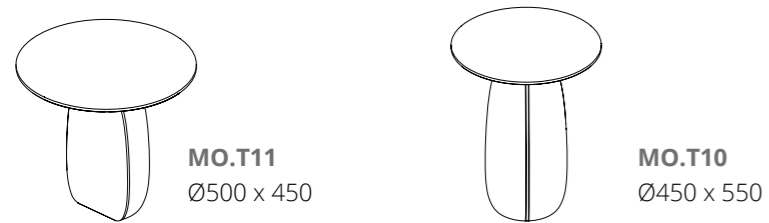
### MAESTRO - Efrem Bonacina e Greta Macrì \_pag. 20



### SATURO - Silvio Girolamo\_pag. 24



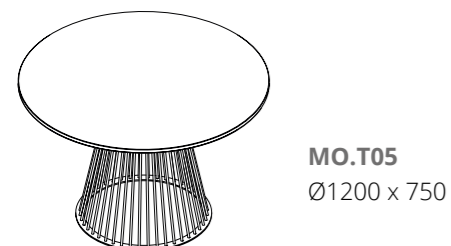
### DUCALE - Michele Monitillo\_pag. 32



### TORRES - Michele Monitillo \_pag. 36



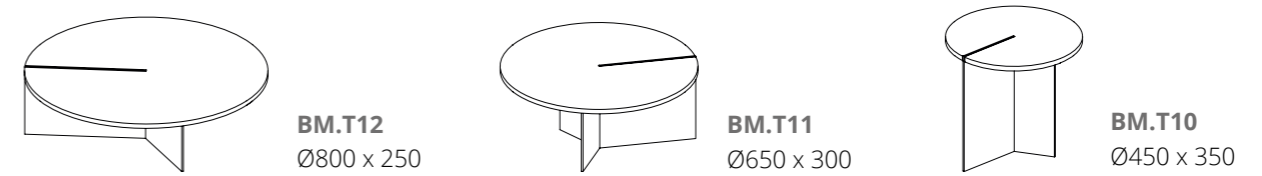
### TORRES - Michele Monitillo\_pag. 44



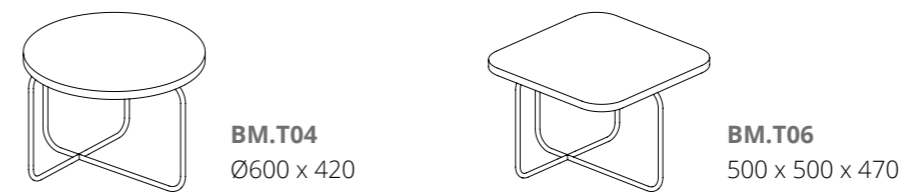
## COFFEE TABLES - DINING TABLES

Coffee Tables - Dining Tables

### ACAYA- Efrem Bonacina e Greta Macrì \_pag. 52



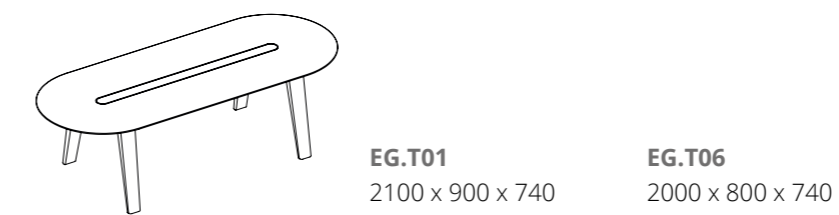
### MILETO - Efrem Bonacina e Greta Macrì \_pag. 62



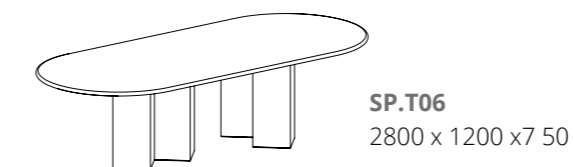
### BADISCO - Claesson Koivisto Rune\_pag. 72



### MAXIMUS - Emmanuel Gallina \_pag. 76



### CITY - Studioepepe\_pag. 82



### COCCARO - Michele Monitillo\_pag. 88



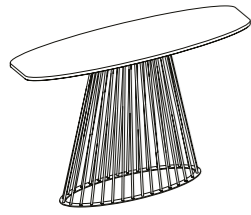


## CONSOLE

Console

### TORRES - Michele Monitillo\_pag. 40

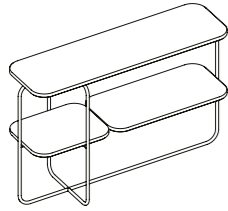
---



**MO.T06**  
1300 x 400 x 825

### MOLINA - Efrem Bonacina e Greta Macrì\_pag. 58

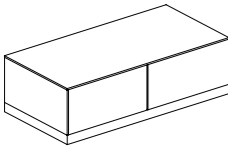
---



**BM.T01**  
1200 x 400 x 800

### ADRIA - Michele Monitillo\_pag. 66

---



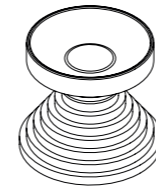
**MO.T02**  
1200 x 600 x 360

## ICONE

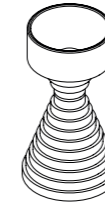
Icons

### KAREN - Efrem Bonacina e Greta Macrì\_pag. 18

---



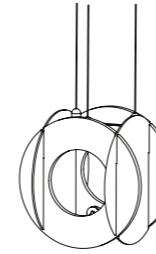
**BM.C04**  
Ø180 x 170



**BM.C05**  
Ø120 x 240

### SENATO - Efrem Bonacina e Pier Lomascolo\_pag. 46

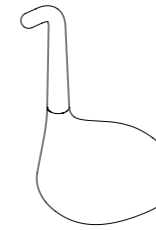
---



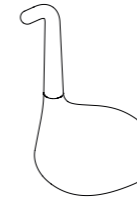
**EB.C01**  
235 x 235 x 235

### NESSIE - Luca Nichetto\_pag. 56

---



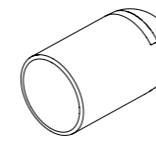
**LN.C01**  
190 x 270 x 405



**LN.C02**  
140 x 200 x 300

### OVO - May Day Design e Andrea Maldifassi\_pag. 65

---



**MD.C01**  
Ø95 x 175

### PINGU - Matteo Ragni\_pag. 80

---

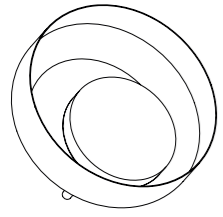


**MR.C04**  
90 x 110 x 200

## LAMPADE

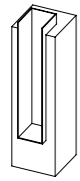
Lamps

### LEUCA - Efrem Bonacina e Greta Macrì \_pag. 16

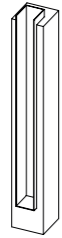


**BM.C09**  
Ø300 x 100

### SPECCHIA - Félix Millory Architecture \_pag. 26

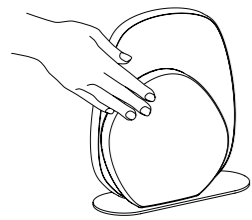


**FM.C01**  
120 x 140 x 430



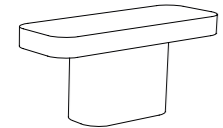
**FM.C02**  
120 x 140 x 960

### ANTUMBRA - Magnus Long Design Studio \_pag. 34

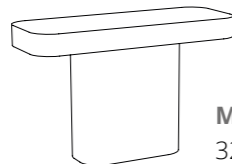


**ML.C01**  
270 x 110 x 320

### TOR - Magnus Long Design Studio \_pag. 42



**ML.C02**  
320 x 120 x 200



**ML.C03**  
320 x 120 x 300

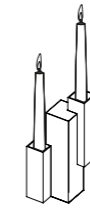
## COMPLEMENTI E CENTROTAVOLA

Complements and centerpieces

### SABINA - Félix Millory Architecture \_pag. 28

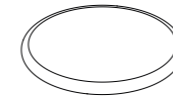


**FM.C03**  
72 x 72 x 230



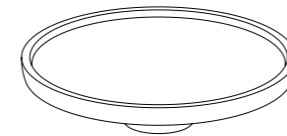
**FM.C04**  
100 x 100 x 230

### SELCE - Efrem Bonacina + Andrea Teoldi \_pag. 64

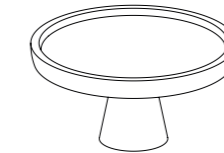


**BT.C01**  
Ø110 x 20

### COLIMENA - Giovanni Pesce \_pag. 80

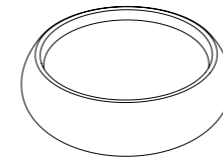


**GP.C02**  
Ø400 x 100



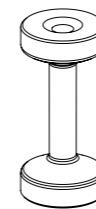
**GP.C03**  
Ø300 x 150

### SASSO - Mr Smith Studio \_pag. 74

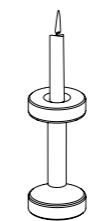


**MS.C01**  
Ø255 x 90

### TARA - Lorenzo Palmeri \_pag. 78

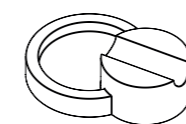


**LP.C01**  
Ø90 x 185



**LP.C02**  
Ø110 x 205

### ROCA - Efrem Bonacina + Greta Macrì \_pag. 90

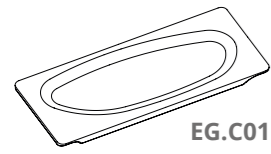


**BM.C03**  
130 x 100 x 40

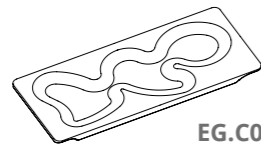
## COMPLEMENTI E CENTROTAVOLA

Complements and centerpieces

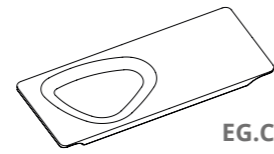
### VENERI - Emmanuel Gallina\_pag. 48



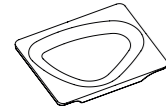
**EG.C01**  
350 x 150 x 25



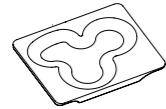
**EG.C02**  
350 x 150 x 25



**EG.C03**  
350 x 150 x 25

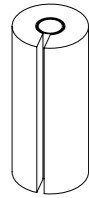


**EG.C04**  
180 x 150 x 25



**EG.C05**  
180 x 150 x 25

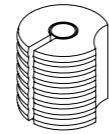
### LOTO - Efreem Bonacina e Greta Macrì \_pag. 54



**BM.C06**  
Ø60 x 140

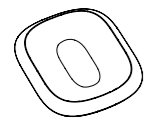


**BM.C07**  
Ø72 x 70

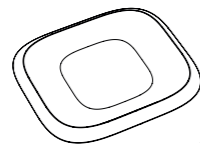


**BM.C08**  
Ø72 x 70

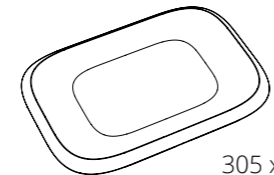
### ORTE - Claesson Koivisto Rune \_pag. 75



**CKR.C01**  
165 x 135 x 27



215 x 190 x 27



305 x 215 x 27

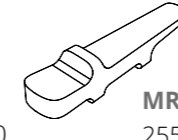
## SCULPTURE COLLECTION

Sculpture collection

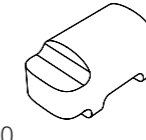
### SAFARI - Matteo Ragni\_pag. 22



**MR.C01**  
160 x 65 x 240



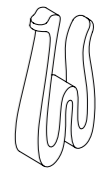
**MR.C02**  
255 x 60 x 60



**MR.C03**  
150 x 80 x 80



**MR.C05**  
130 x 60 x 240



**MR.C06**  
125 x 50 x 240

### GALERIE - Efreem Bonacina e Greta Macrì \_pag. 38



**MO.C04**  
Ø55 x 308



**MO.C05**  
Ø64 x 308



**MO.C06**  
Ø69 x 308



**MO.C07**  
Ø69 x 308



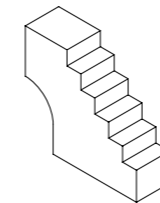
**MO.C08**  
Ø74 x 308

### GALERIE - Efreem Bonacina e Greta Macrì \_pag. 60

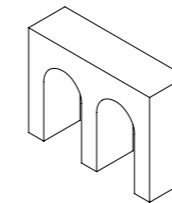


**MO.C03**  
150 x 182 x 240

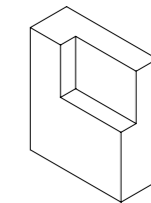
### CITY - Studiopepe\_pag. 86



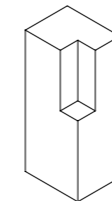
**SP.C01**  
400 x 120 x 350



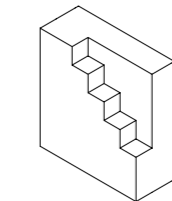
**SP.C02**  
400 x 120 x 300



**SP.C03**  
300 x 120 x 350



**SP.C04**  
150 x 120 x 350



**SP.C05**  
300 x 120 x 320

**Pietre di Monitillo**  
Art Direction: Efrem Bonacina  
Direzione Scientifica: Francesco Zurlo, Arianna Vignati, Dipartimento di Design Politecnico di Milano

Monitillo Marmi Srl nell'ambito della normativa tecnica adottata, si riserva il diritto di apportare (in ogni momento e senza obbligo di preavviso) tutte le modifiche che, a proprio insindacabile giudizio, ritenesse opportune a migliorare la funzionalità e le prestazioni dei prodotti, nonché per rispondere a proprie esigenze tecniche e produttive.

*Within the framework of the adopted technical standards, Monitillo Marmi Srl reserves the right to make all those changes (at any time and without prior notice) that, in its final judgements, are needed to improve the functions and performances of the products, as well as to meet the company's technical and production requirements*

Monitillo Marmi s.r.l  
Via Matera, Km 2  
70022 Altamura (BA)  
tel. +39 080 3112325

[info@monitillomarmi.it](mailto:info@monitillomarmi.it)  
[www.monitillo1980.it](http://www.monitillo1980.it)